

Introduction to Botany. Lecture 16

Alexey Shipunov

Minot State University

October 13, 2014



1 Questions and answers

2 Tissues

- Origin of tissues
- Tissues basics
- First tissues: parenchyma and epidermis



1 Questions and answers

2 Tissues

- Origin of tissues
- Tissues basics
- First tissues: parenchyma and epidermis



Previous final question: the answer

What is the difference between zygotic and gametic life cycles?



Previous final question: the answer

What is the difference between zygotic and gametic life cycles?

- **Zygotic:** $Y! \rightarrow R!$, no diplont, many protists
- **Gametic:** $R! \rightarrow Y!$, ho haplont, animals and few protists



Tissues

Origin of tissues



Origin of tissues and organs of plants: first steps



Origin of tissues and organs of plants: first steps

Why did plants go to the land? Which problems did they meet and how did they resolve them? What was the plant way of acquiring tissues comparing with animals?



Tissues

Tissues basics



Definition of tissues and organs

- **Tissue** is a union of cells which have common origin, function, and similar morphology
- **Organ** is a union of different tissues which have common function(s) and origin



Simple and complex tissues

- **Simple tissues** have only one kind of cells
- **Complex tissues** have more than one cell type. This tissue type is unique for plants



Tissues

First tissues: parenchyma and epidermis

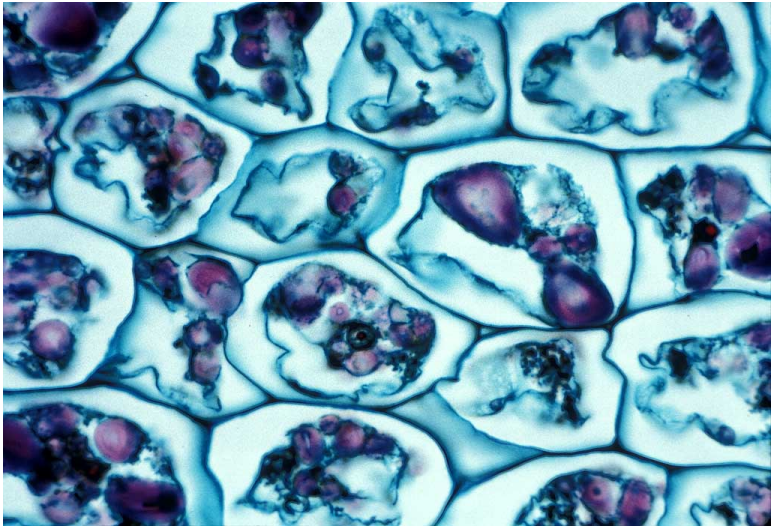


Parenchyma (ground, main tissue)

- Spherical or elongated cells
- Thin primary cell wall
- Sometimes, crystal inclusion bodies
- Main functions: photosynthesis and storage



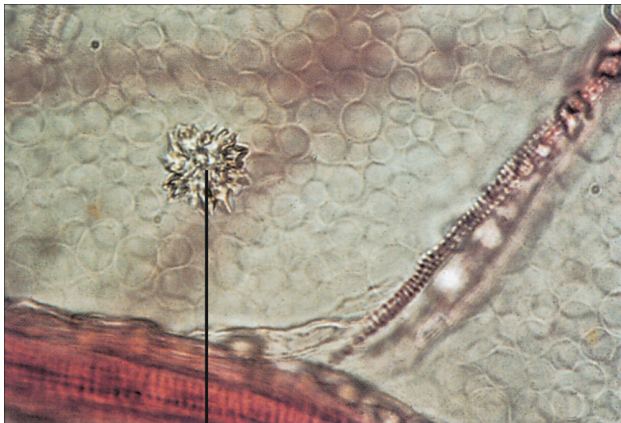
Parenchyma cells of a potato



Parenchyma cells of a potato; the central cell shows obvious nucleus with starch stained purple (LM $\times 83$)



Parenchyma with crystals



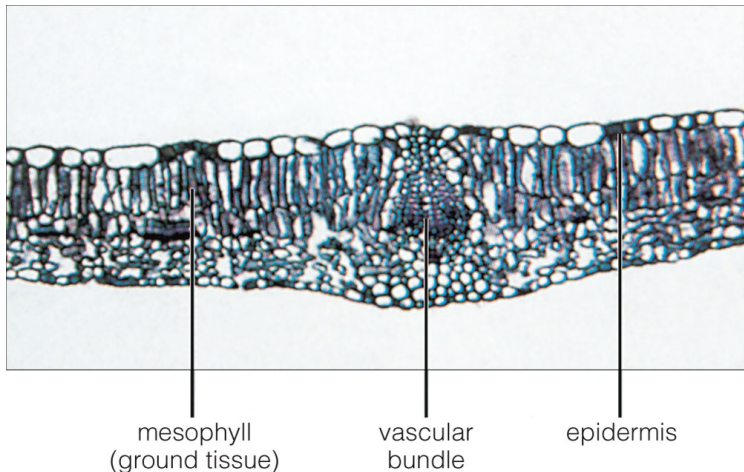
crystal

© 2006 Brooks/Cole - Thomson

Parenchyma cells often include crystals (e.g., of calcium oxalate)



Photosynthetic parenchyma



© 2006 Brooks/Cole - Thomson

Photosynthetic parenchyma in lilac (*Syringa vulgaris*) leaf

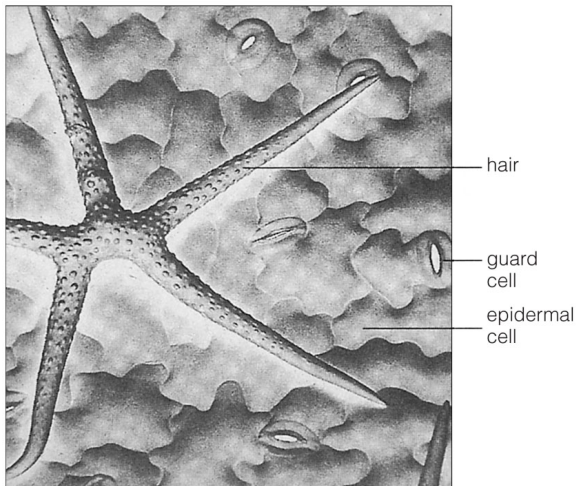


Epidermis: the complex tissue

- Complex tissue of different cell types:
 - ① Epidermal cells
 - ② Stomata cells:
 - Guard cells
 - Subsidiary cells
 - ③ Trichomes
- Shapes and chemical compounds vary
- Main functions: gas exchange, transpiration, defense



Epidermal cells

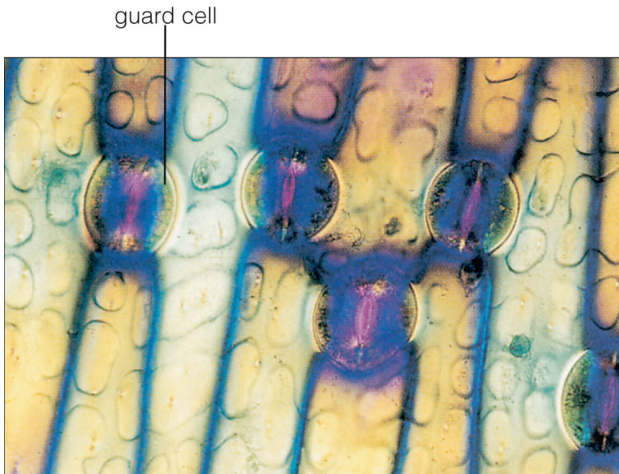


© 2006 Brooks/Cole - Thomson

Three kinds of Shepard's purse (*Capsella bursa-pastoris*) epidermal cells



Stomata



© 2006 Brooks/Cole - Thomson

Stomata with guard cells and pores (*Iris* sp.)



Final question (2 points)



Final question (2 points)

How are plant tissues different from animal tissues?



Summary

- The structure of plant body, its organs and tissues is a result of land colonization
- **Complex tissues** have different cell types, **secondary tissues** originate from lateral meristems (i.e., cambium)
- **Parenchyma**, or ground tissue, is a main component of young plant organs
- **Epidermis** is a complex tissue which includes stomata



For Further Reading



A. Shipunov.

Introduction to Botany [Electronic resource].

2010—onwards.

Mode of access:

http://ashipunov.info/shipunov/school/biol_154



Th. L. Rost, M. G. Barbour, C. R. Stocking, T. M. Murphy.

Plant Biology. 2nd edition.

Thomson Brooks/Cole, 2006.

Chapter 4.

